





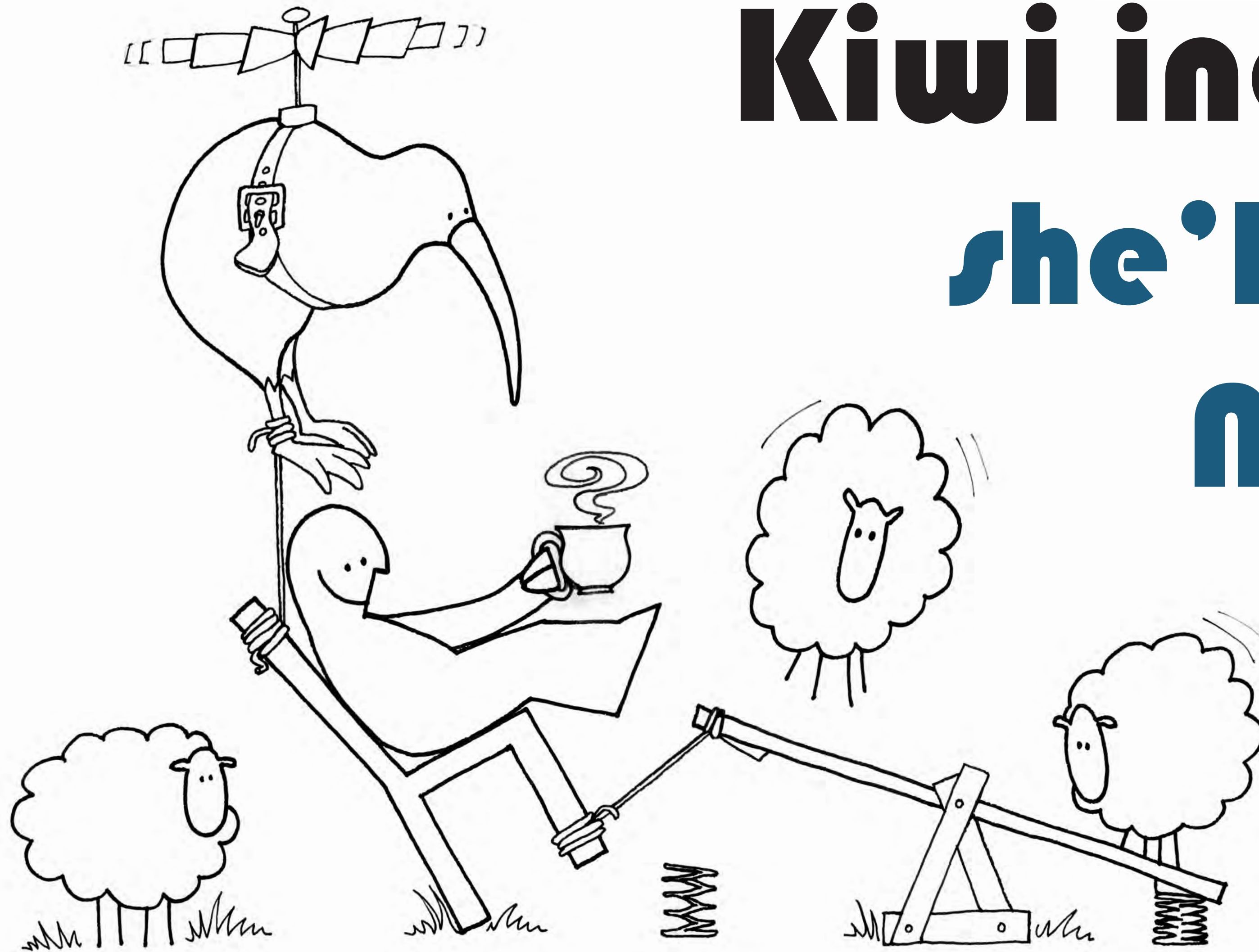
Victoria University of Wellington  
**EMERGENCY KIT**  
STORM – EARTHQUAKE – FLOODING  
You are expected to be self-sufficient for 3 or more days in an emergency  
Workplace Emergency Supplies

- Essential medication
- Food – non-perishable, high energy, easy to consume, i.e.
  - Muesli Bars
  - Chocolate / sweets
  - Canned food
- Warm clothing
- Walking shoes
- Water – at least 3 litres per person per day
- Torch and batteries
- Contact details for family

Supplied by Facilities Management  
Enquiries: Facilities-Management@vuw.ac.nz



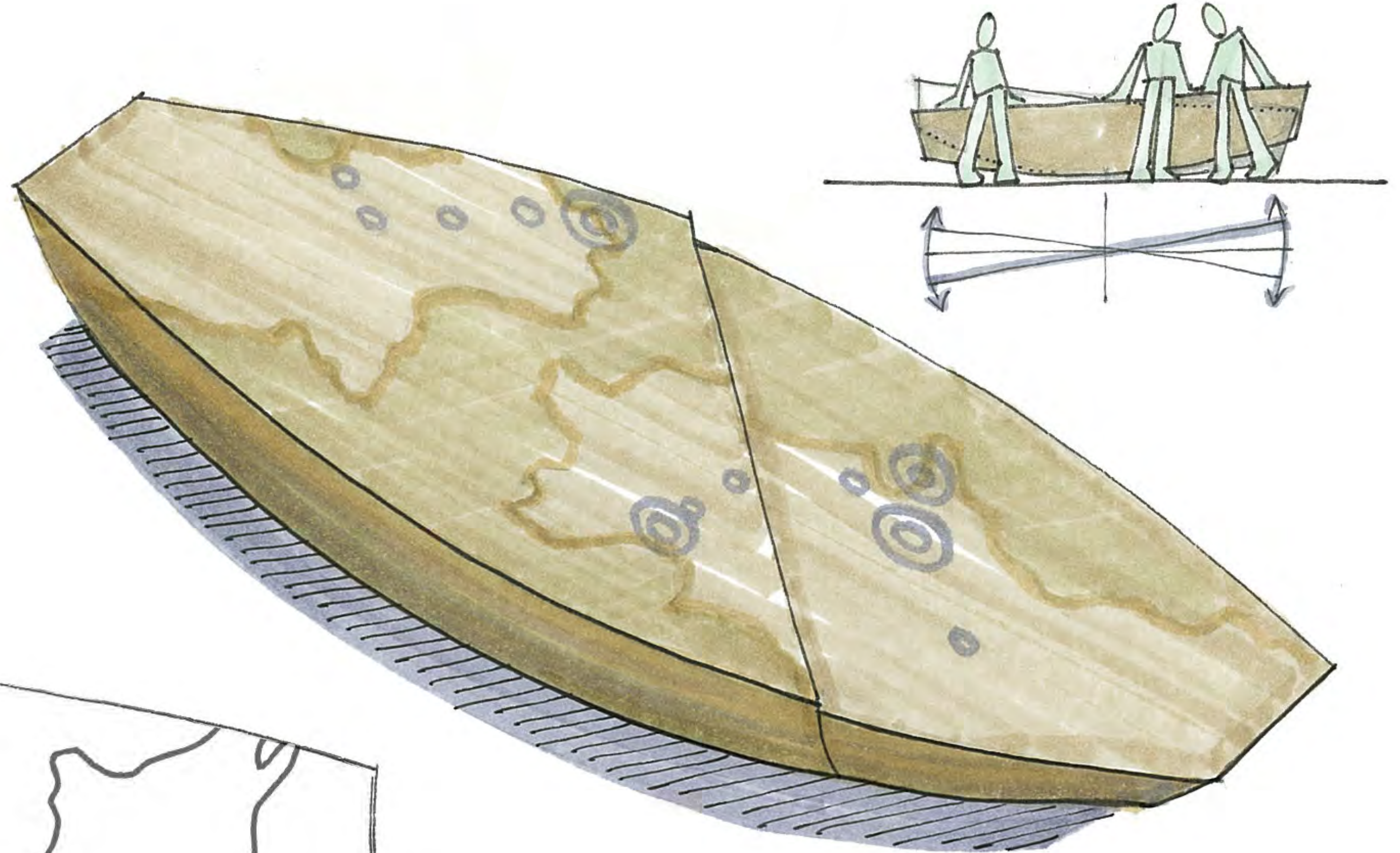
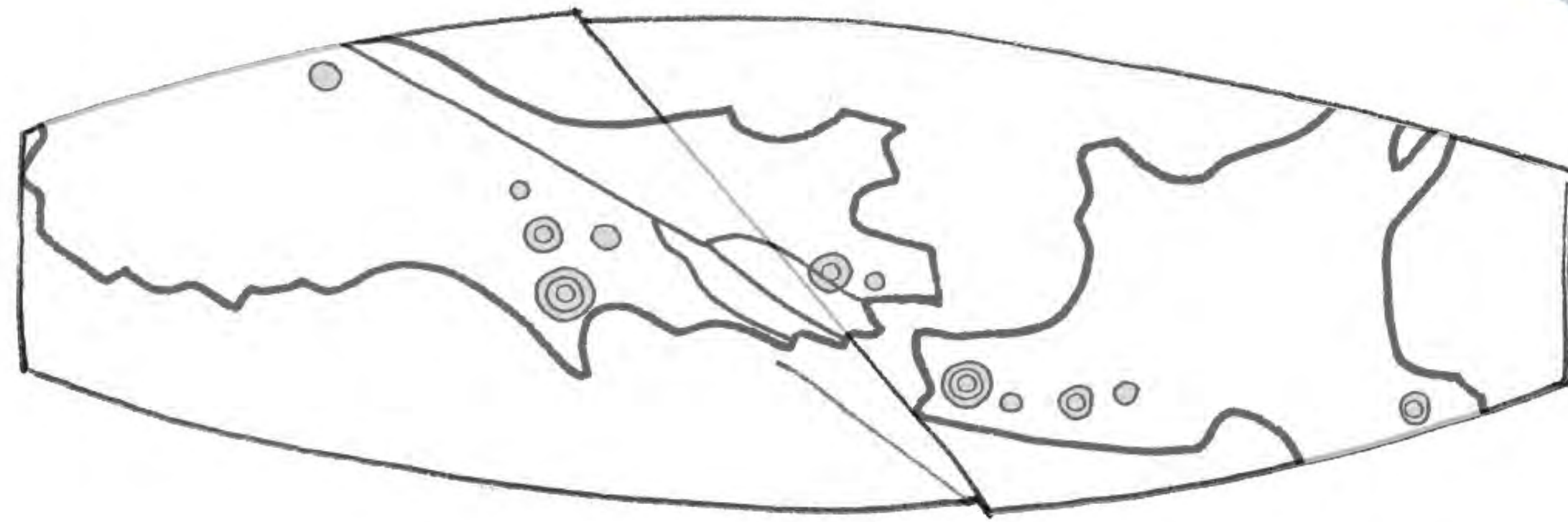
# Kiwi ingenuity: *she'll be right* No. 8 wire DIY *ethos*





## EARTHQUAKE BENCH

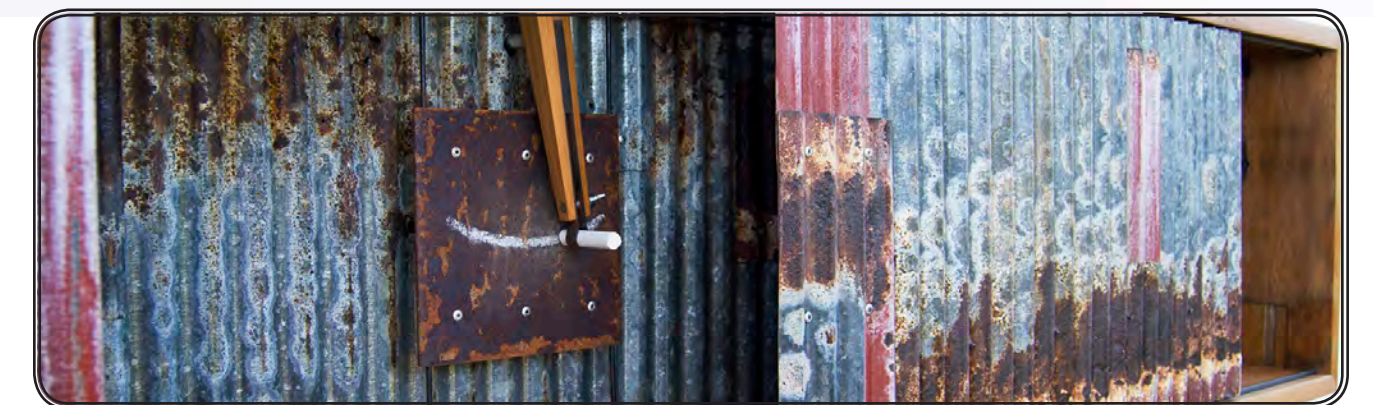
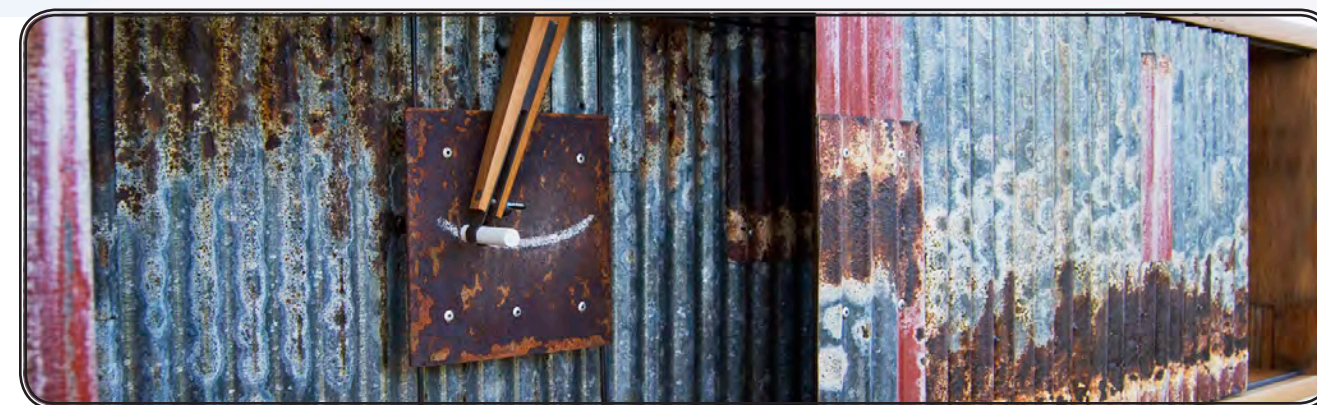
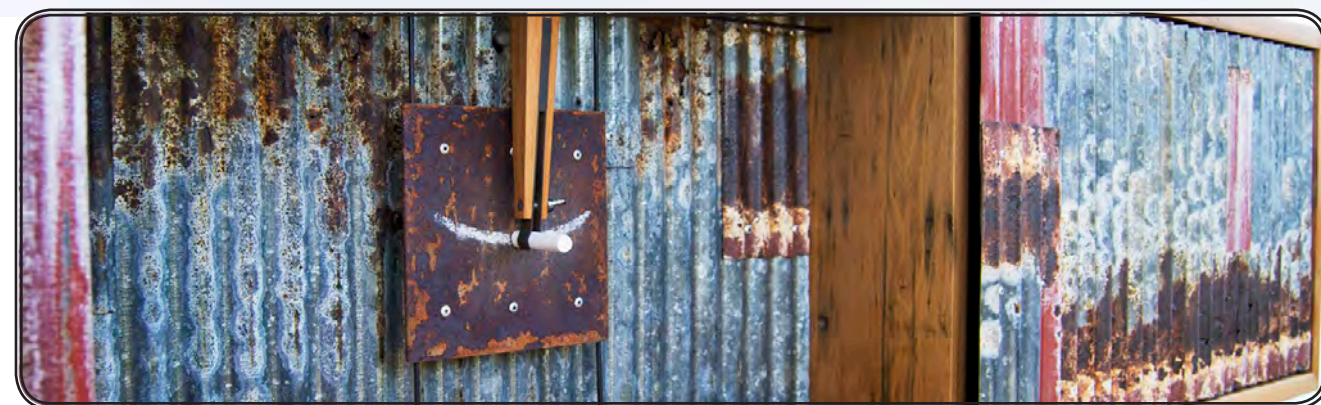
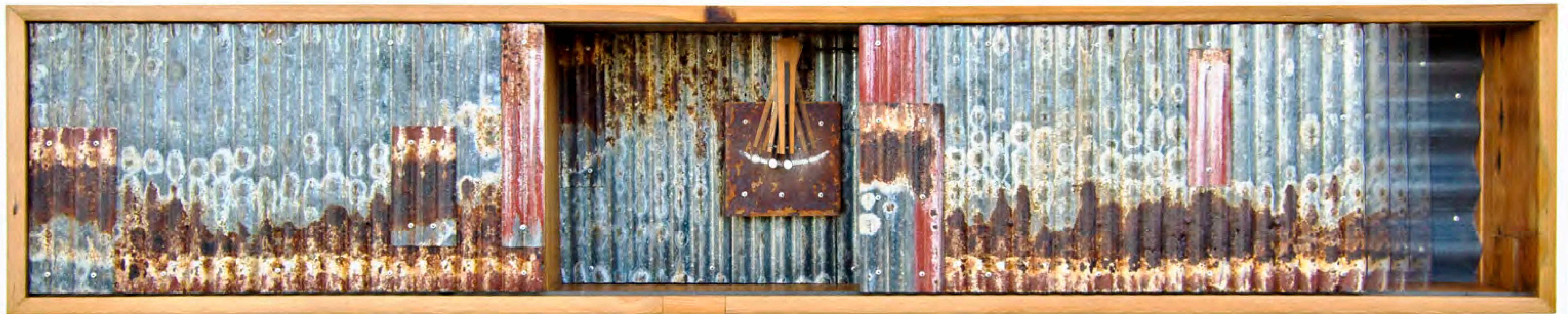
A conceptually inspired design, the aim of the Earthquake Bench is to acknowledge the prominence of seismic faults and events upon New Zealand's collective national identity, and to challenge the normative, negative perception of earthquakes by enabling a playful, interactive, user-controlled experience that celebrates seismic activity within a regionally-specific context.





## NZ VERNACULAR SEISMIC CABINET

The Seismic Cabinet celebrates the enduring experience of earthquakes within the context of a New Zealand housing vernacular. While seismic events expose people to feelings of anxiety and helplessness, the Seismic Cabinet aims to mitigate these negative emotional responses through playful interaction: As the user slides the cabinet door a device is triggered resulting in the perpetual creation of a “seismic” mark. Referencing a seismometer, the act of mark-making pays homage to the memory of earthquakes of the past as well as supporting an attitude of resilience towards future seismic events.







# EARTHQUAKE FIRST AID KIT

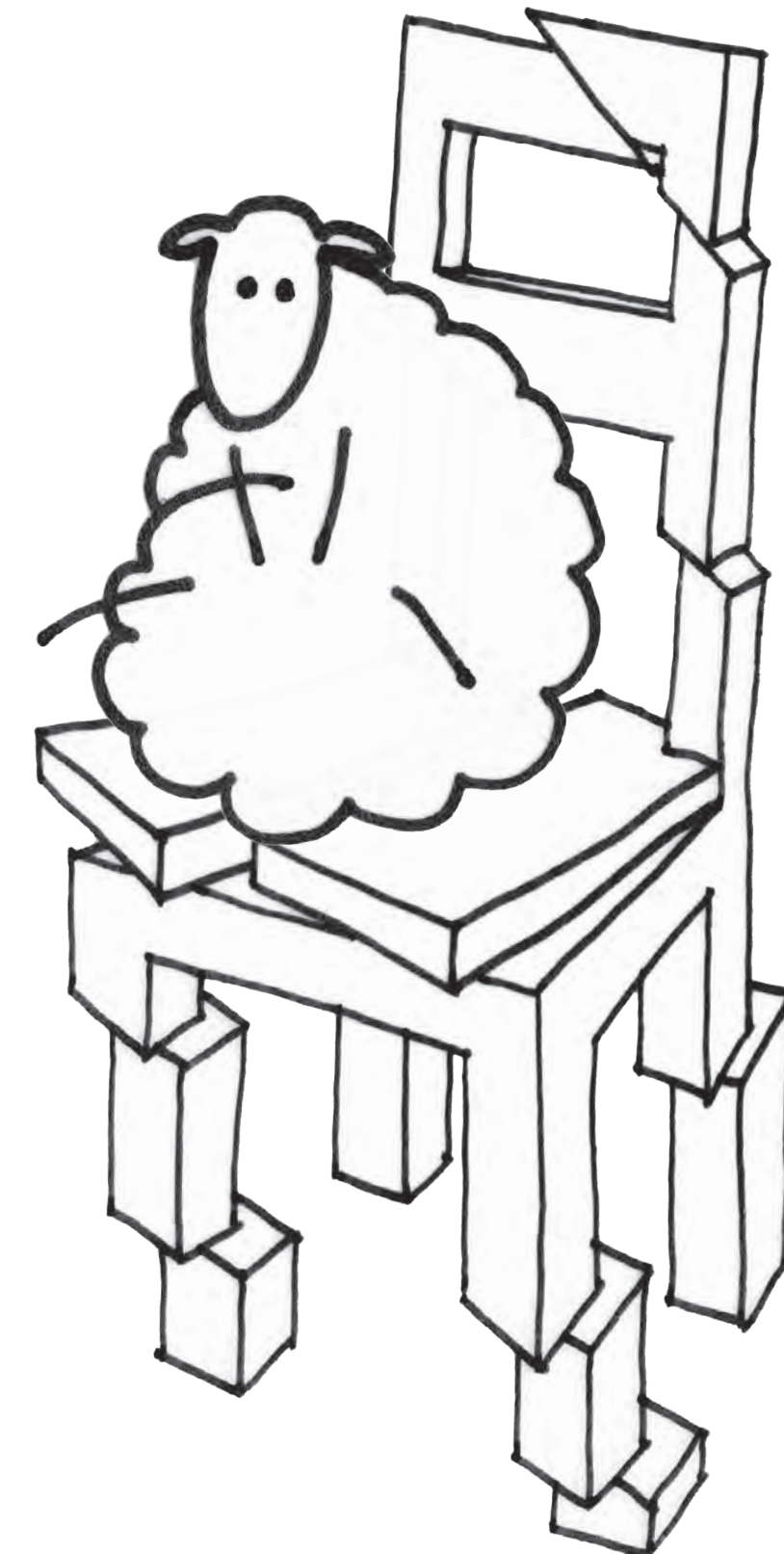
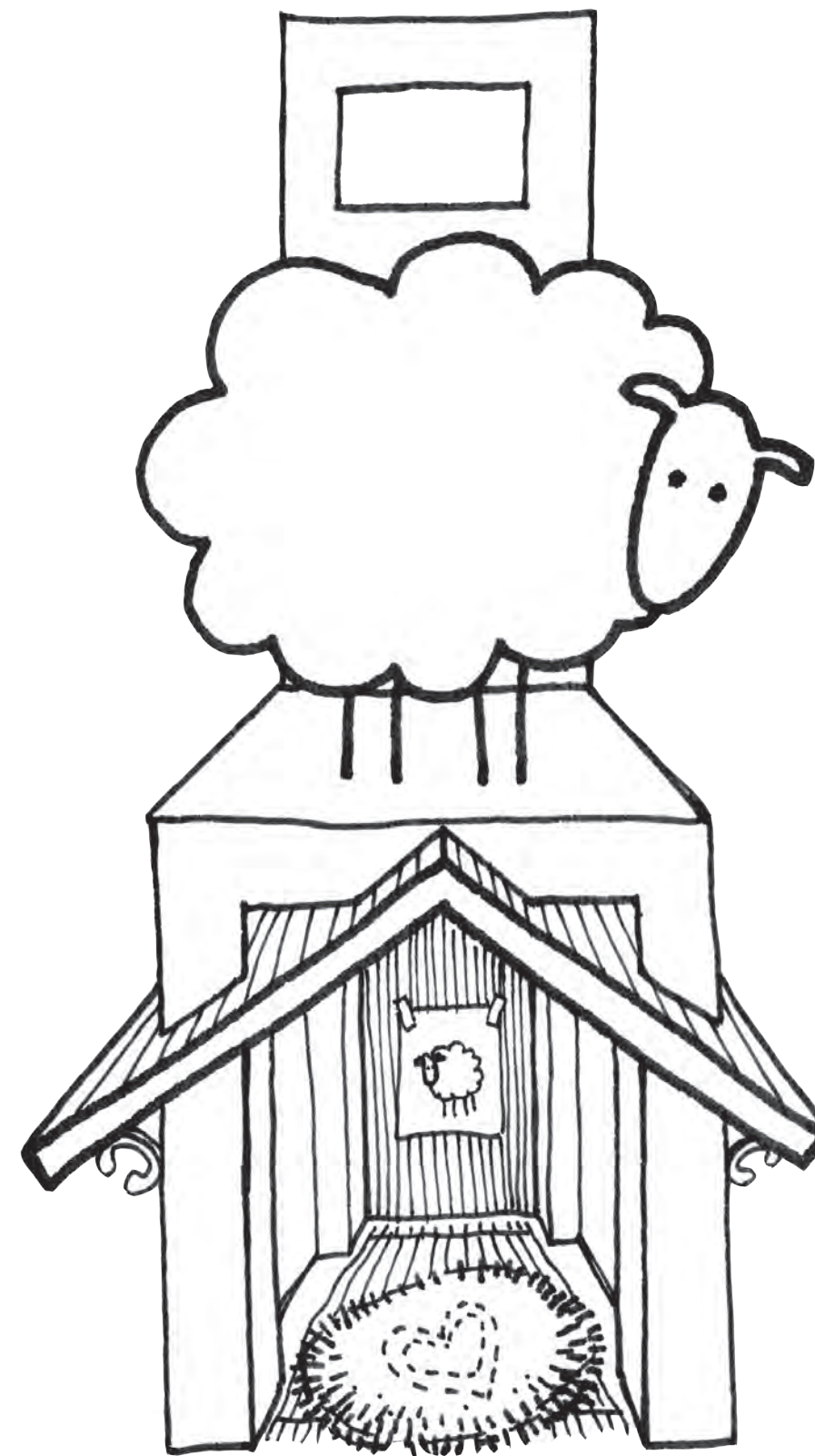
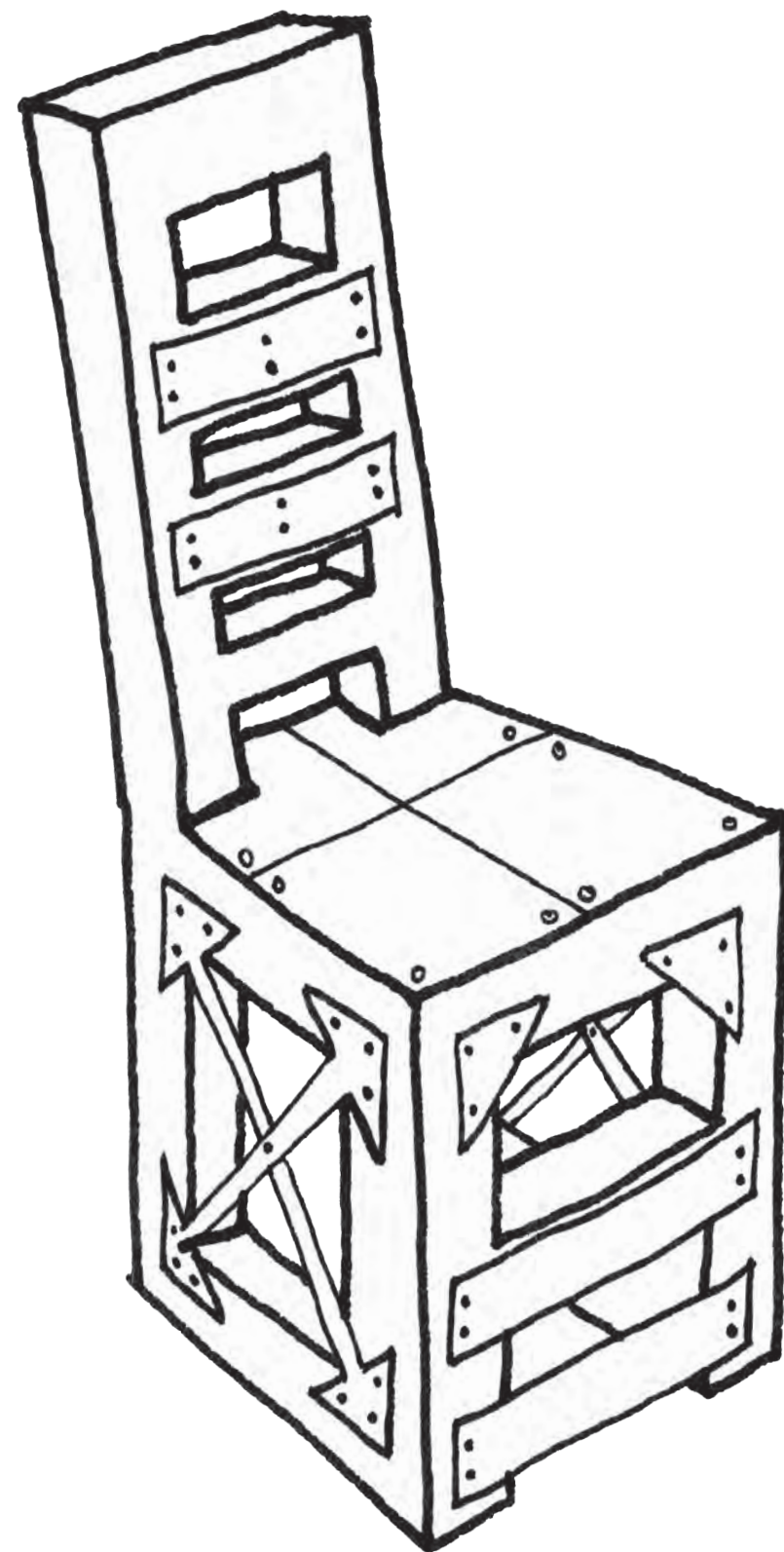
Research shows that the consumption of alcohol increases following seismic events and other natural disasters. The Earthquake First Aid Kit aims to raise awareness about the threat of substance abuse as it relates to earthquakes, as well as to foster psychological resilience in light of the day-to-day stress and anxiety associated with the imminent threat of seismic events.

The contents within the Earthquake First Aid Kit are only accessible as a result of a strong seismic event: Upon being triggered by earthquake-induced motion, the sensor in the cabinet releases the door.





# How does the imminent threat of seismic activity impact or inform the New Zealand design identity?





**Does the New Zealand design identity reflect a particular attitude of resilience inspired by living on continuously moving and shaky ground?**



**Does New Zealand design embrace an aesthetic of  
temporality, dynamism, or ephemerality?  
...Does it embrace an aesthetic of timelessness,  
stability, or permanence?**



# Does New Zealand's precarious existence within the Pacific Ring of Fire fuel innovation, risk-taking, and creativity?







**Does New Zealand design reflect an identifiable note of humour or lightness? If so, might this reflect an effort to subconsciously or consciously promote psychological resilience?**







**Thank you.**

